



CLIC® TOP & CLIC® Original Pipe Hangers, Spacers & Accessories

CLIC-2NP-0113

CLIC® TOP - The Premium One-Piece Self Locking Plastic Pipe Clamp. Excellent Chemical Resistance.

Pure Polyamide Construction UV Resistant for Indoor or Outdoor Installation

-OR-

CLIC® Economical - Copolymer Construction for Indoor Installation Only



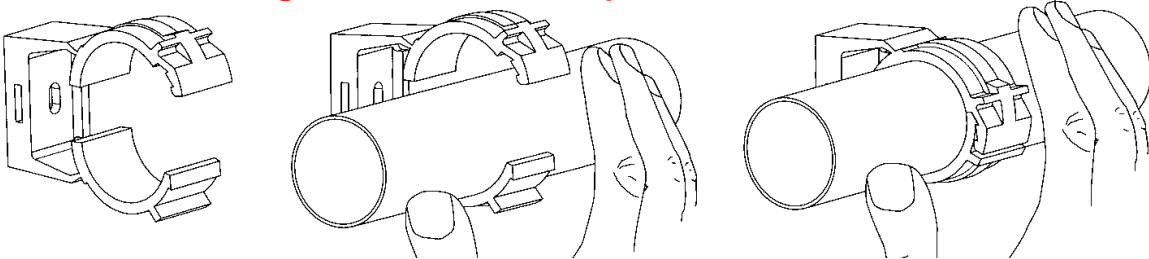
For 1/8" - 2" Pipe & Tubing



For 2-1/2" - 4" Pipe & Tubing

- ✓ Excellent Protection for Plastic Piping - No Sharp Edges
- ✓ Available for IPS Pipe 1/8" - 4" & CTS Pipe 1/2" - 2", Plus Popular 1-1/2" Tubing Size for Conduit & Other Applications
- ✓ Corrosion Resistant
- ✓ High Impact Strength & Flexibility
- ✓ UL® 94 HB Flammability Rating

Engineered for Exceptional Ease of Use



Single-Hand Installation - Place the pipe, apply slight pressure and the clamp locks itself with a sharp clic. Saves up to 40% installation time in comparison to commonly used clamps.

Assorted Mounting Accessories



Stand-Off Spacers

- Approximate distance from mounting surface to surface of pipe



Strut Hangers

- Provides Easy Mount to Standard 1-5/8" width Strut Channel



Stainless Steel Mounting Flange Nut

- Fits Hanger Base to provide 1/4"-20 threaded rod, stud or bolt connection



Stainless Steel Flange Nut Mounting Adapter

- Adapts CLIC® Flange Nut to 3/8"-16 threaded rod, stud or bolt connection

CLIC® TOP & CLIC® Economical Technology

Count on the advantages and quality proven world-wide successful use, even under very hard conditions, for more than 25 years.

Compact design

One-piece:
- space saving
- no loss of screws

Smooth surface

Allows pipe expansion/contraction lengthwise.

3 slotted holes for secure and accurate fixation

For position adjustments.

Center marks for threads and screws

Perfect positioning.

Less inventory

The flexible locking system allows installation of multiple diameter pipes with fewer clamp sizes.

Large base

For high stability.

Integrated thread

The larger CLIC® is provided with an inside thread for mountings with 1/2" threads.

Safety lock

The only pipe clamp with the extra strong double interlocking closing mechanism for absolute secure hold.
- wide clamping range
- high loading capacity, secure hold
- easy to open

Strong swivel joints

The patented joint mechanism together with high-quality plastics allows installation work also at very low temperatures.

Flexible jaws

In conjunction with the flexibility of the material, pipe tolerances can be compensated to a large extent.

Slot for threaded Flange Nut



Flange Nut

For 1/4" - 20 Rod or Bolt



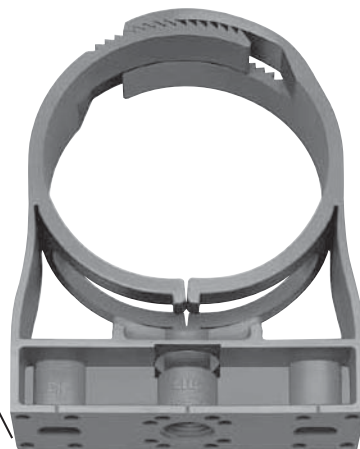
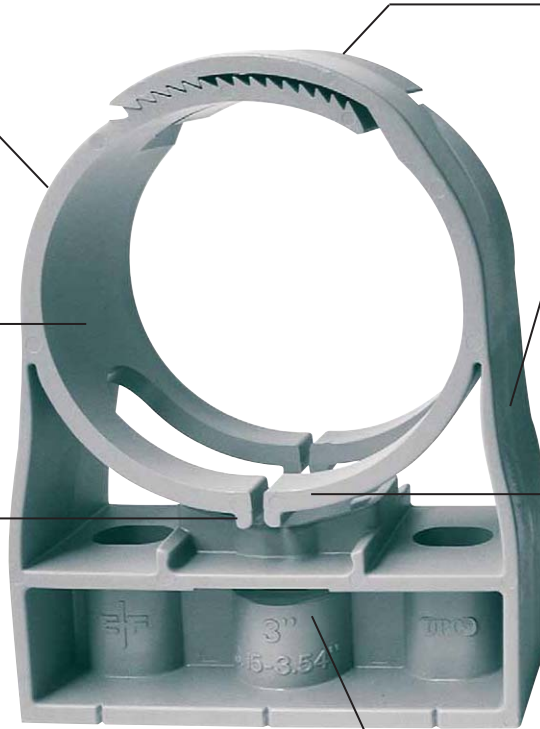
Flange Nut Adapter

Adapter for 3/8" - 16 Rod or Bolt



Strut Hanger

Mounts to standard 1-5/8" width Strut Channel. Includes screw for mounting to center of CLIC® Hanger.



Progressive Products From Spears® Innovation & Technology

CLIC® Top & CLIC® are registered trademarks of Egli Fischer Co. Ltd



SPEARS® MANUFACTURING COMPANY • CORPORATE OFFICE
15853 Olden St., Sylmar, CA 91342 • PO Box 9203, Sylmar, CA 91392
(818) 364-1611 • www.spearsmfg.com

